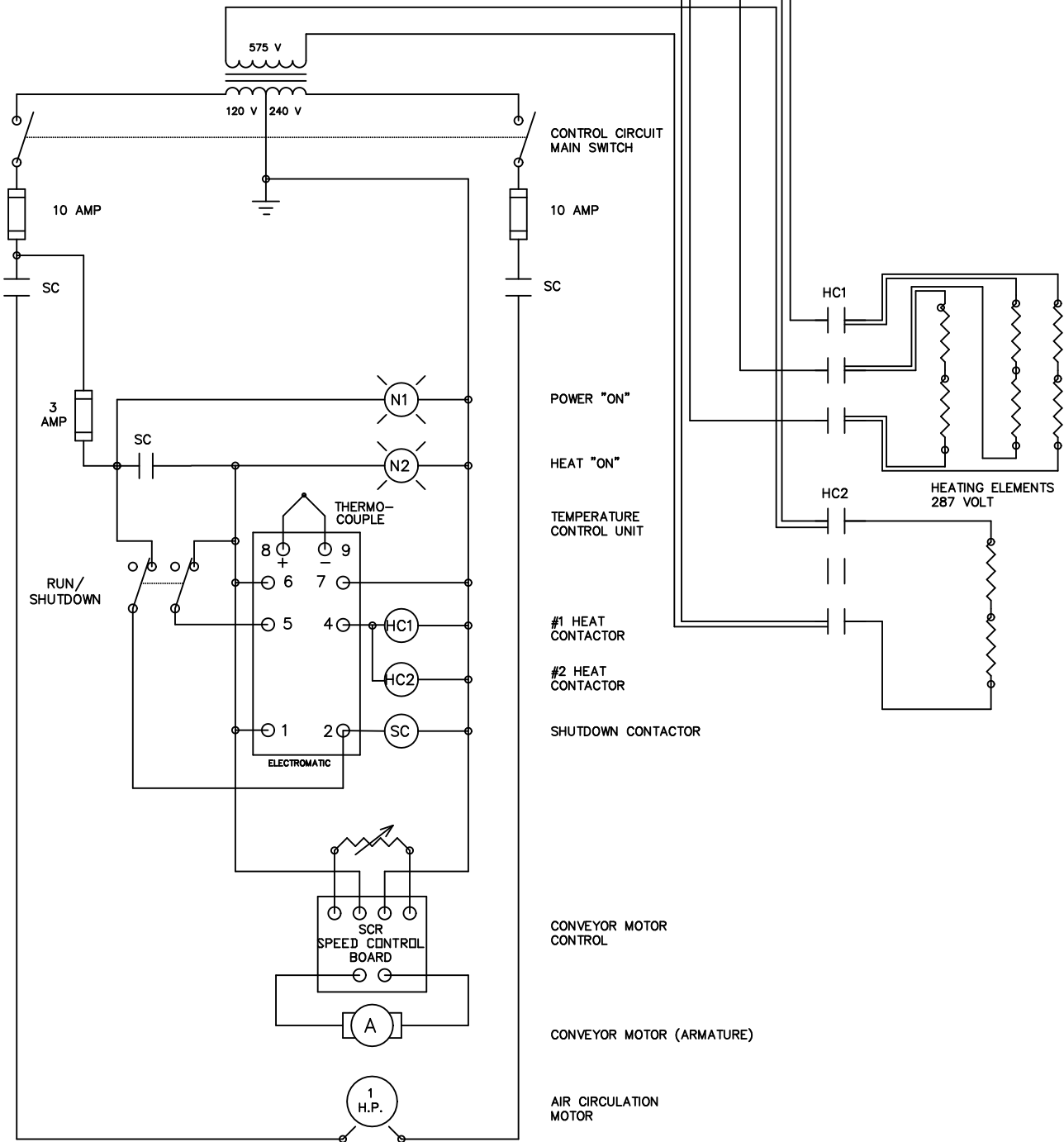


CUSTOMER TO SUPPLY
575 VOLT 3 PHASE
20 AMPS 60 HZ.



CONTROL CIRCUIT
MAIN SWITCH

10 AMP

10 AMP

SC

POWER "ON"

HEAT "ON"

TEMPERATURE
CONTROL UNIT

#1 HEAT
CONTACTOR

#2 HEAT
CONTACTOR

SHUTDOWN CONTACTOR

CONVEYOR MOTOR
CONTROL

CONVEYOR MOTOR (ARMATURE)

AIR CIRCULATION
MOTOR

HEATING ELEMENTS
287 VOLT

REV1 -AIR CIRCULATION MOTOR
CHANGED FROM 3/4 H.P. TO 1 H.P.
-8 AMP FUSES CHANGED TO 10 AMP

ACT2010 ELECTRICAL CIRCUIT
WITH SHUT DOWN

RBS EQUIPMENT DESIGNS LIMITED DESIGNERS & MANUFACTURERS OF PACKAGING EQUIPMENT		
Title	Used on	Date
575 V CIRCUIT	ACT 2010 TUNNEL	OCTOBER/93
Drawn by	Material	SCALE
R. SENIOR	ELECTROMATIC TEMPERATURE CONTROL	N/A
Plot Date/Time	Tolerances: unless stated	Drawing No.
MAY 21, 1996 12:19	SHEET METAL MACHINING .0005 .030 .001 .0005 .0100 .0005 .0005	ELC20105
		REVISION
		1